

Control systems are used to make room operations **simple** and to provide **remote, proactive management & support.**

Control your room from one simple interface. Turn your projector on, raise your motorised stand, lower the blinds, all from the touch of a single button. The CommBox Control system really is a breath of fresh air and is changing the main reason why control systems are installed...



**Modern Design** - Sleek modern glossy acrylic fascia exudes quality

**Unlimited Control** - Control a vast array of devices through a range of control ports, including Ethernet, IR, RS232/485, I/O contact closures and relays

**Ultra Responsive** - Responds to real-time events from connected devices by running custom command sequences

**HTML5 Interface** - Cutting edge HTML 5 web interface allows control from any device, anywhere, such as phones, tablets and computers

**Feedback** - Dynamic device status is reflected live in the control UI

**Scalable UI** - Automatically resizes to suit the mobile device being used

**HTML5 Editor** - Ground breaking HTML 5 web editor allows control UIs to be developed with ease, by anyone

**Drag & Drop** - Intuitive drag and drop and simple workflows make it fast, simple and cost effective

**Existing Library** - Access CommBox's vast library of IR and RS232 codes without touching a single line of code

**Convenient and Simple** - Simply enable Control Central in each controller, and it will automatically push all of its data to Control Central without any programming or manual configuration.

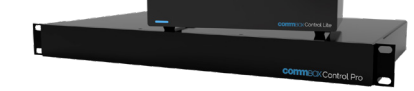
**Access Anytime, Anywhere** - Located in the cloud, with a fully scalable user interface, you can access through your smartphone and support staff anywhere.

**At-A-Glance Monitoring** - Each room has a set of configurable indicators for at-a-glance monitoring without even having to click on each room. Once your controllers have reported in, you can configure your own alerts.

CENTRAL EDITOR CONTROLLERS PROCESSORS

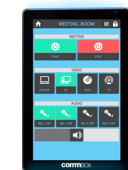


commBOX Control Core



commBOX Control Lite

commBOX Control Pro



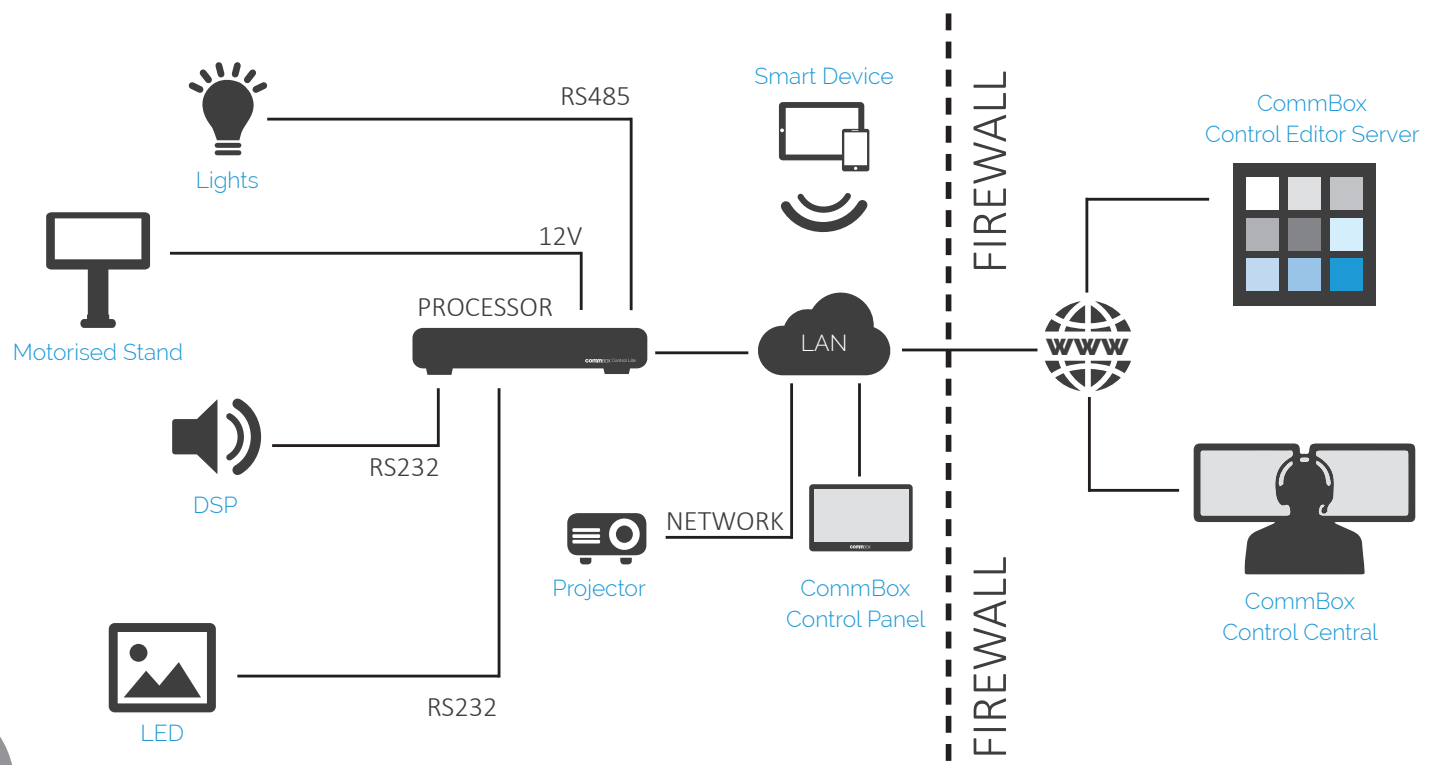
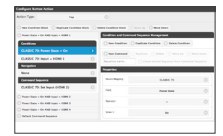
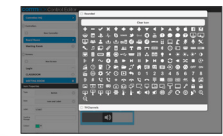
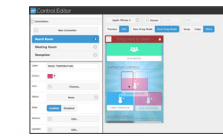
commBOX Control Panel 10



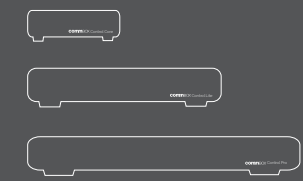
commBOX Control Panel 7



commBOX Joey Micro 9



## STEP ONE



Choose your Control Processor (Your choice is based on how many devices are in your room)

## STEP TWO



Choose your User Interface if you want local control. (Many CommBox Control systems are being installed purely for the remote management so no user interface is required)

## STEP THREE



Connect to your equipment via network, RS232, RS485, Infra-red or Contact Closure & customise your interface.

## STEP FOUR



Customise your CommBox Control Central portal.